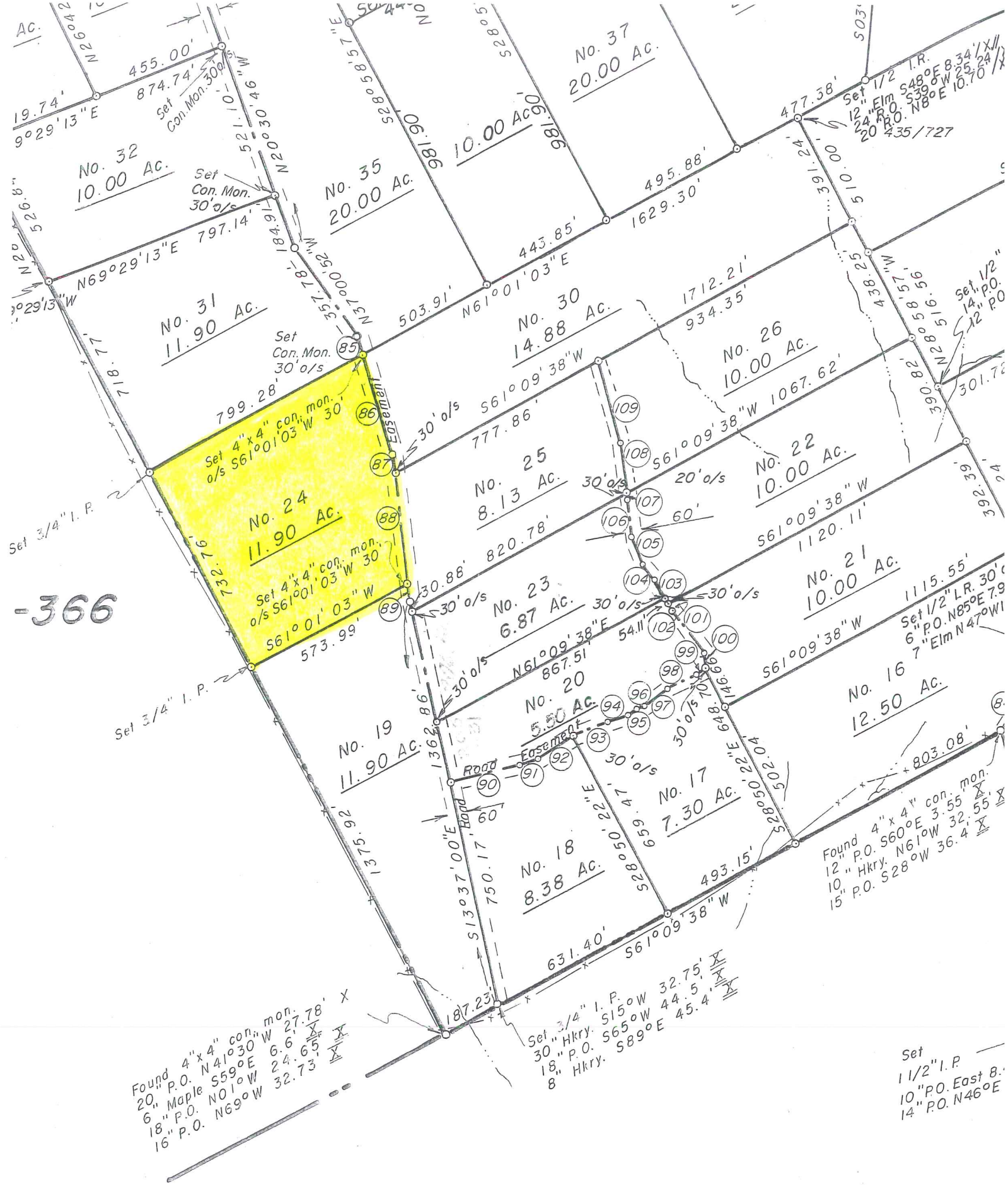


AC.



-366

Found 4" x 4" con. mon. x  
 20" P.O. N41°30'W 27.78' x  
 6" Maple S59°E 6.6' x  
 18" P.O. N01°W 24.65' x  
 16" P.O. N69°W 32.73' x

Set 3/4" I.P. 32.75' x  
 30" Hkry. S15°W 44.5' x  
 18" P.O. S65°W 44.5' x  
 8" Hkry. S89°E 45.4' x

Found 4" x 4" con. mon. x  
 12" P.O. S60°E 3.55' x  
 10" Hkry. N61°W 32' x  
 15" P.O. S28°W 36.4' x

Set  
 1 1/2" I.P.  
 10" P.O. East 8.  
 14" P.O. N46°E

Found 4" x 4"